

Arriving at the campsite



Address:
Flower Camping Cap Finistère, 20 Rue de Gouesnach, Névez, 29760 Penmarc'h



By rail

Quimper SNCF train station
From Paris, Rennes, Nantes...

Driving to the campsite from Quimper:

With Breizh Go, line 956 links Quimper station to Penmarc'h in 45 minutes.

The nearest stop to the campsite is "Penker Ar Bloas" in Plomeur, located 1 km away.

By bicycle

La Littorale: cycling route along the Breton coastline

From the cycling path, you can arrive at the campsite in 6 minutes by bicycle (1.8 km).



Carpooling

Carpooling means protecting the environment, limiting traffic and sharing costs in a friendly atmosphere. Offer or search for a trip on mobicoop.fr, a collaborative carpooling site with no management fees.



mobicoop
La mobilité partagée

On location, no car required!

On foot...

- Lidl and Intermarché stores: 1.8 km
- Penmarc'h center: 2.5 km
- Ster Beach in Penmarc'h: 3 km

Especially by bicycle!

- Alignments of the Madeleine: 7 min
- Grève Blanche beach located in Guilvinec: 13 min
- Pointe de la Torche Beach: 15 min
- Saint Guénolé: 21 min
- Hiking departure for Trunvel Pond and the biological reserve: 35 min
- Tudy Island: 45 min
- Bénodet: 1h15

Book your traditional or electric bikes at the campsite reception, either on-site or by calling 02 98 58 66 93.

Every bicycle journey is filled with discoveries. What if an expedition, even an extended one, was a ride rather than a limitation?

In transportation

Coaches Breizh Go!

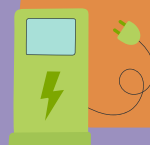
Bus line 956 operates year-round, connecting Plomeur, Penmarc'h, Le Guilvinec, Tréffiagat, Plobannaec-Lesconil, Plomeur, Pont l'Abbé, Combrit, and Quimper.

The nearest stop to the campsite is "Penker Ar Bloas" located in Plomeur, just 1 km away from the campsite.

Purchase your tickets directly through the BreizhGo M-ticket app or from the driver (€2.50 per trip and complimentary for children under 12).

Review the schedules to organize your visits!

Easily recharge your electric vehicle.



Charging stations are accessible at the campsite.